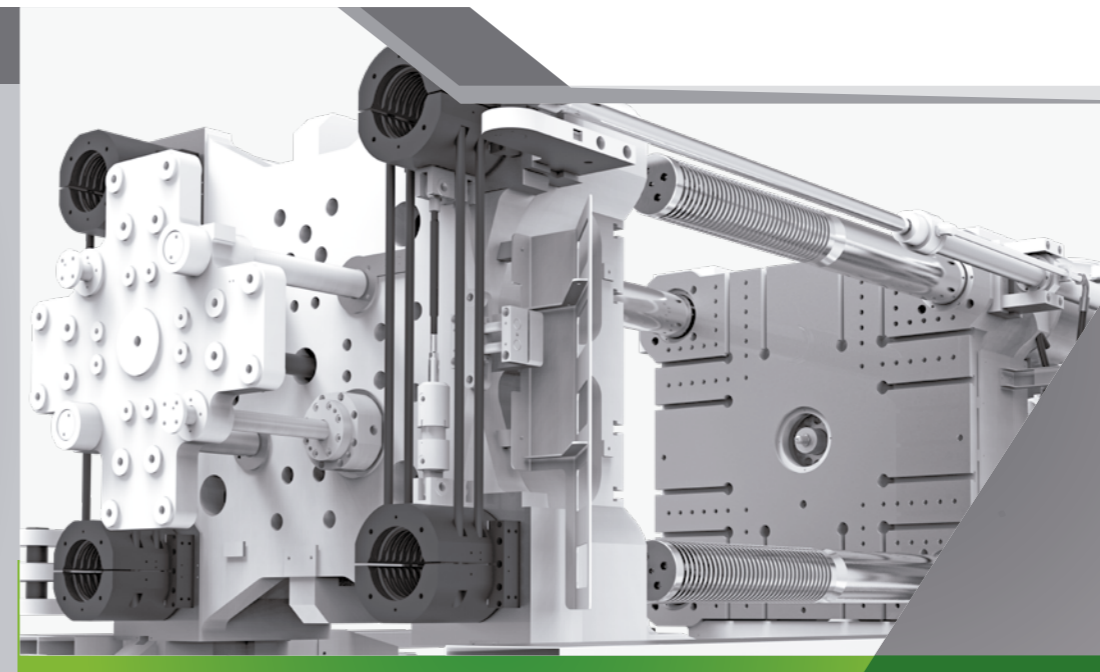


HAITIAN PLASTICS MACHINERY GROUP CO., LTD
 No. 1688 Haitian Road, Xiaogang, Beilun, Ningbo, P. R. China.
 + 86-574-8617 7005 (China)
 + 86-574-8617 7242 (International)
 haitian@mail.haitian.com
 www.haitianpm.com

NINGBO HAITIAN HUAYUAN MACHINERY CO.,LTD.
 No.1, Nanhuan Road, Export Processing Zone, Beilun, Ningbo, Zhejiang, 315806 P.R. China
 +86-574-8617 7242
 +86-574-8622 1864
 haitian@mail.haitian.com
 www.haitianpm.com



SPECIFICATIONS

GLOBAL



HAITIAN JUPITER III SERIES

Servo hydraulic two-platen solution

4,500 - 10,800 kN

JU 20200717-IV



Combination Possibilities

4,500 - 10,800 kN

	CLAMPING UNIT		INJECTION UNIT														
MACHINE TYPE	1730	2230	3430	4630	5330	6730	8930	11300	17300	22300	32300	40300	50300	62300	93300	106300	518000
JU4500III	Standard	Standard	Combination	Combination													
JU5500III		Combination	Standard	Combination													
JU6500III		Combination	Combination	Standard	Combination												
JU7500III			Combination	Combination	Standard	Combination											
JU9000III					Combination	Standard	Combination										
JU10800III					Combination	Combination	Standard	Combination									
JU12000III					Combination	Combination	Combination	Combination									
JU13000III						Combination	Combination	Combination	Combination								
JU14000III						Combination	Combination	Combination	Combination	Combination							
JU16000III							Combination	Combination	Combination	Combination	Combination						
JU18500III								Combination	Combination	Combination	Combination	Combination					
JU21000III									Combination	Combination	Combination	Combination	Combination				
JU24000III										Combination	Combination	Combination	Combination	Combination			
JU28000III											Combination	Combination	Combination	Combination	Combination		
JU33000III												Combination	Combination	Combination	Combination		
JU40000III															Combination	Combination	
JU55000III																Combination	Combination
JU66000III																	Combination

SPECIFICATION JU4500III

SPECIFICATIONS
INJECTION UNIT

	1730	JU4500III								3430	4630								
CLAMPING UNIT																			
Clamping force	kN	4500								kN	Clamping force								
Dist. between tie bars (H×V)	mm	810×800								mm	Dist. between tie bars (H×V)								
Mold height max	mm	850								mm	Mold height max								
Mold height min	mm	350								mm	Mold height min								
Ejector stroke	mm	250								mm	Ejector stroke								
Ejector force	kN	110								kN	Ejector force								
Max. daylight	mm	1400								mm	Max. daylight								
Mold opening stroke ①	mm	1050/550								mm	Mold opening stroke ①								
Max. mold weight ②	t	6.5								t	Max. mold weight ②								
INJECTION UNIT																			
		A	B	C	A	B	C	D	A	B	C	D	A	B	C	D			
Screw diameter	mm	60	65	70	65	70	75	80	70	80	85	90	80	85	90	100	mm	Screw diameter	
Screw L /D ratio	L/D	21.7	20	18.6	21.5	20	18.7	17.5	22.9	20	18.9	17.8	22	20.7	19.6	17.6	L/D	Screw L /D ratio	
Injection volume (theoretical)	cm ³	792	929	1078	1068	1239	1423	1619	1424	1860	2100	2354	2212	2497	2799	3456	cm ³	Injection volume (theoretical)	
Injection weight (PS)	g	720	846	981	972	1128	1295	1473	1296	1692	1911	2142	2013	2272	2547	3145	g	Injection weight (PS)	
Injection rate	g/s	366	430	498	372	431	495	563	385	503	567	636	525	593	665	821	g/s	Injection rate	
Injection pressure	MPa	185	158	136	182	157	137	120	208	159	141	126	181	160	143	116	MPa	Injection pressure	
Injection pressure (max)	MPa	221	188	162	212	183	160	140	239	183	162	145	209	185	165	134	MPa	Injection pressure (max)	
Plasticizing rate (GPPS) ③	g/s	56.8	63.0	71.5	60.0	68.8	77.8	86.4	71.2	93.8	103	116	73.6	81.4	92.6	113	g/s	Plasticizing rate (GPPS) ③	
Plasticizing rate (HDPE) ④	g/s	80	90	105	85.7	102	114	129	102	137	155	179	107	118	134	165	g/s	Plasticizing rate (HDPE) ④	
Screw speed	rpm	250		225				220				165				rpm	Screw speed		
OTHERS																			
Pump motor power	kW	45		45				55				65				kW	Pump motor power		
Heating power	kW	27		33				39				48				kW	Heating power		
Machine dimension (L x W x H)	m	6.87×2.17×2.33				6.87×2.17×2.33				7×2.17×2.37				7.30×2.17×2.68				m	Machine dimension (L x W x H)
Machine weight	t	19		20				21				23				t	Machine weight		
Hopper capacity	kg	50		50				50				100				kg	Hopper capacity		
Oil tank ⑤	l	450		450				520				600				l	Oil tank		

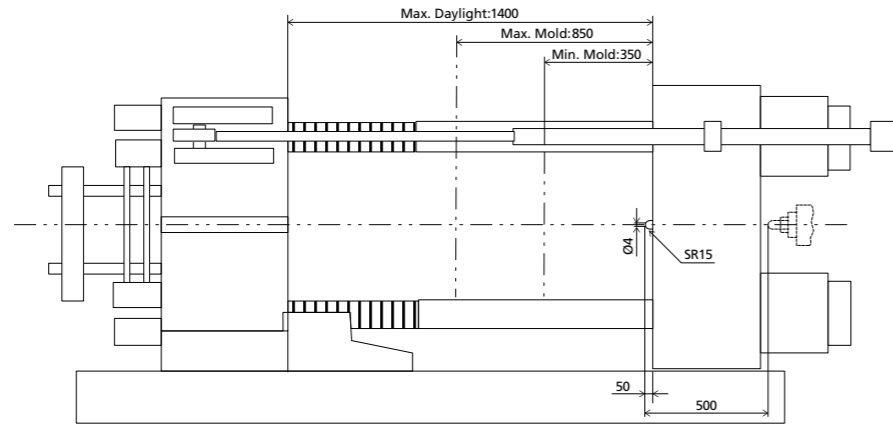
NOTE:

- ① with min. mold height / with max. mold height.
- ② moving platen: 2/3 of max. mold weight.
- ③ Plasticizing capacity (GPPS): GB standard, with application of GPPS plasticizing capacity of 3-zone screws.
- ④ Plasticizing capacity (HDPE): Euromap 19, with application of HDPE plasticizing capacity of barrier screws
The above plasticizing capacity is for reference only.
- ⑤ The oil tank volume refers to the volume of the oil tank itself, excluding the volume in cylinder and pipeline. In this sense, the customer is advised to prepare the hydraulic oil according to 1.35 times of the oil tank volume.

We reserve the right to make changes as a result of further technical advantages.

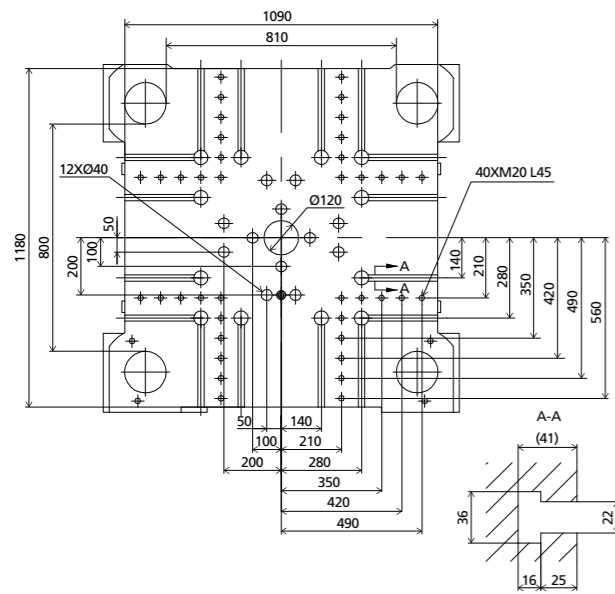
DIMENSIONS JU4500III

Clamping Unit



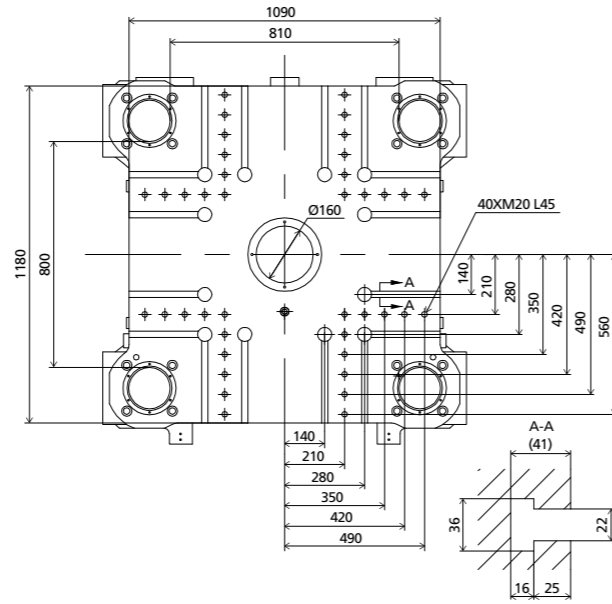
Platen dimensions

Moving platen



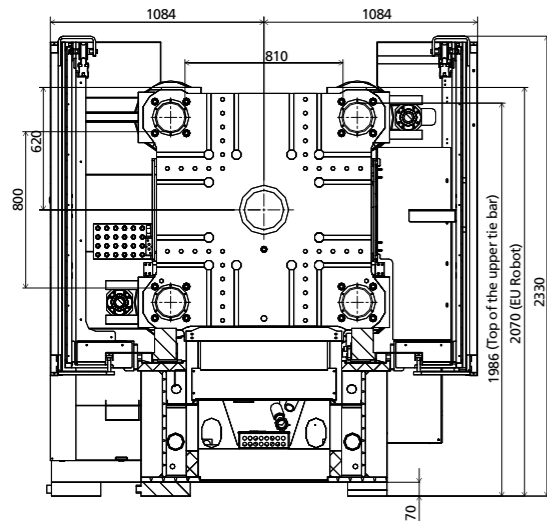
Platen dimensions

Fixed platen



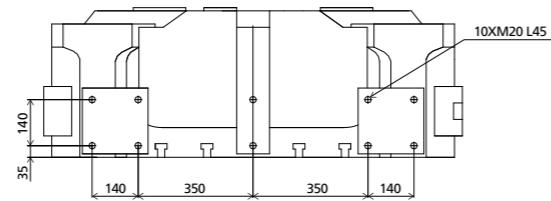
Robot

Mechanical interface

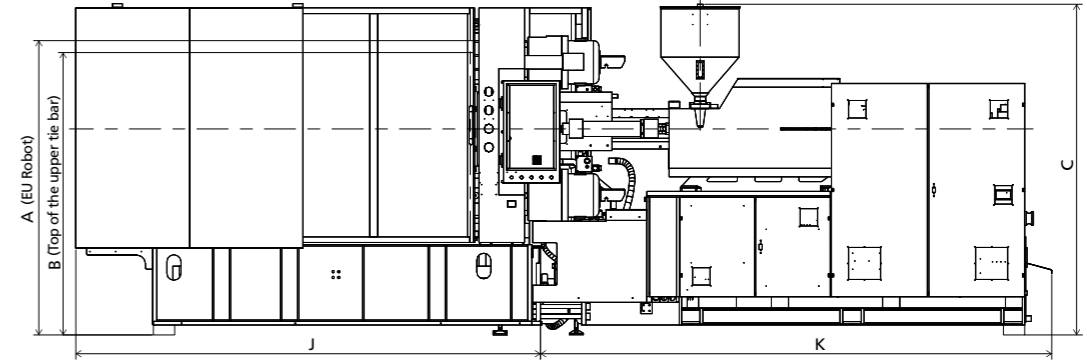


Robot

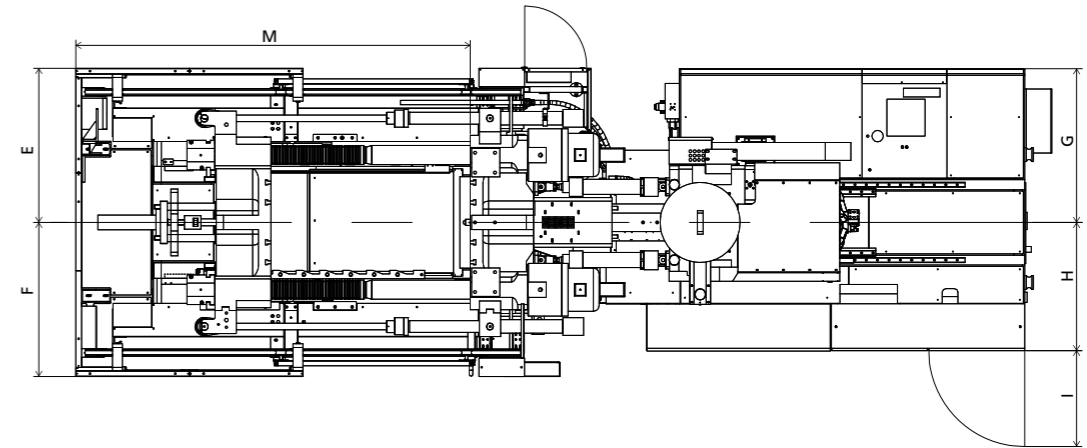
Top view fixed platen



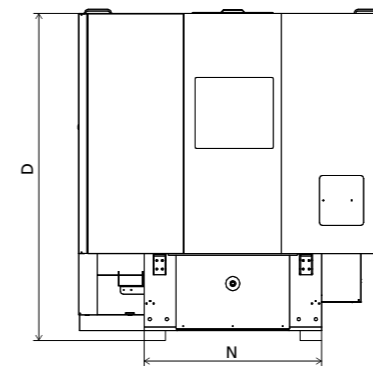
Front view



Top view



Side view



■ Standard

	A	B	C	D	E	F	G	H	I	J	K	M	N
1700	2070	1986	2317	2300	1084	1084	1082	903	675	3269	3597	2774	1248
2230	2070	1986	2327	2300	1084	1084	1082	903	675	3269	3597	2774	1248
3430	2070	1986	2366	2300	1084	1084	1082	903	675	3269	3720	2774	1248
4630	2070	1986	2671	2300	1084	1084	1177	943	675	3269	4019	2774	1248

INJECTION UNIT
DIMENSIONS (mm)

We reserve the right to make changes as a result of further technical advantages.

SPECIFICATION JU5500III

SPECIFICATIONS
INJECTION UNIT

	2230	JU5500III				3430	4630							
CLAMPING UNIT														
Clamping force	kN					5500					kN			
Dist. between tie bars (H×V)	mm					920×830					mm			
Mold height max	mm					900					mm			
Mold height min	mm					350					mm			
Ejector stroke	mm					250					mm			
Ejector force	kN					110					kN			
Max. daylight	mm					1650					mm			
Mold opening stroke ①	mm					1300/750					mm			
Max. mold weight ②	t					8					t			
INJECTION UNIT														
		A	B	C	D	A	B	C	D	A	B	C	D	
Screw diameter	mm	65	70	75	80	70	80	85	90	80	85	90	100	mm
Screw L /D ratio	L/D	21.5	20	18.7	17.5	22.9	20	18.9	17.8	22	20.7	19.6	17.6	L/D
Injection volume (theoretical)	cm ³	1068	1239	1423	1619	1424	1860	2100	2354	2212	2497	2799	3456	cm ³
Injection weight (PS)	g	972	1128	1295	1473	1296	1692	1911	2142	2013	2272	2547	3145	g
Injection rate	g/s	372	431	495	563	385	503	567	636	525	593	665	821	g/s
Injection pressure	MPa	182	157	137	120	208	159	141	126	181	160	143	116	MPa
Injection pressure (max)	MPa	212	183	160	140	239	183	162	145	209	185	165	134	MPa
Plasticizing rate (GPPS) ③	g/s	60.0	68.8	77.8	86.4	71.2	93.8	103	116	73.6	81.4	92.6	113	g/s
Plasticizing rate (HDPE) ④	g/s	85.7	102	114	129	102	137	155	179	107	118	134	165	g/s
Screw speed	rpm	225				220				165				rpm
OTHERS														
Pump motor power	kW	45				55				65				kW
Heating power	kW	33				39				48				kW
Machine dimension (L x W x H)	m	7.29×2.35×2.33				7.20×2.35×2.37				7.62×2.35×2.68				m
Machine weight	t	21				22				24				t
Hopper capacity	kg	50				50				100				kg
Oil tank ⑤	l	450				520				600				l

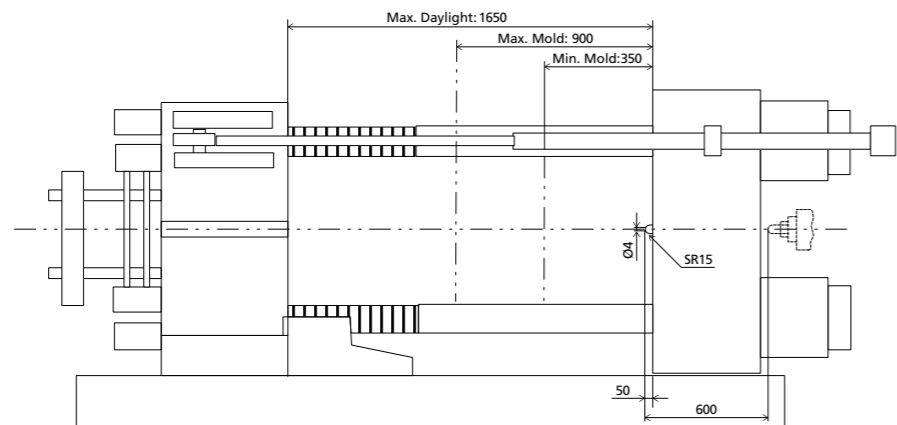
NOTE:

- ① with min. mold height / with max. mold height.
- ② moving platen: 2/3 of max. mold weight.
- ③ Plasticizing capacity (GPPS): GB standard, with application of GPPS plasticizing capacity of 3-zone screws.
- ④ Plasticizing capacity (HDPE): Euromap 19, with application of HDPE plasticizing capacity of barrier screws
The above plasticizing capacity is for reference only.
- ⑤ The oil tank volume refers to the volume of the oil tank itself, excluding the volume in cylinder and pipeline. In this sense, the customer is advised to prepare the hydraulic oil according to 1.35 times of the oil tank volume.

We reserve the right to make changes as a result of further technical advantages.

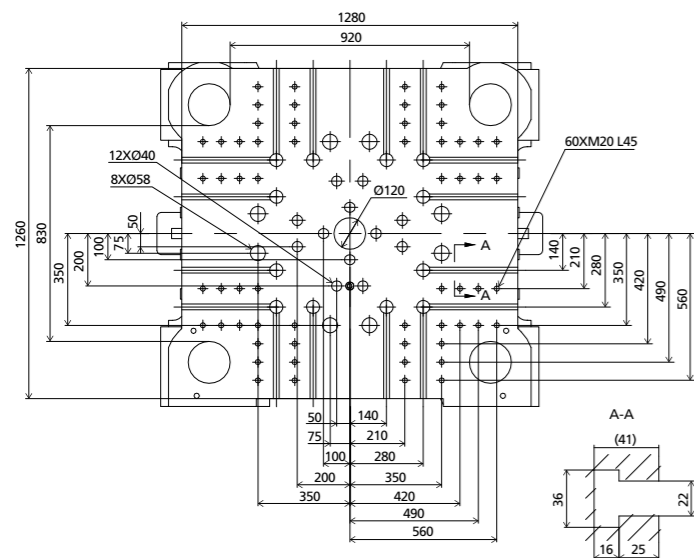
DIMENSIONS JU5500III

Clamping Unit



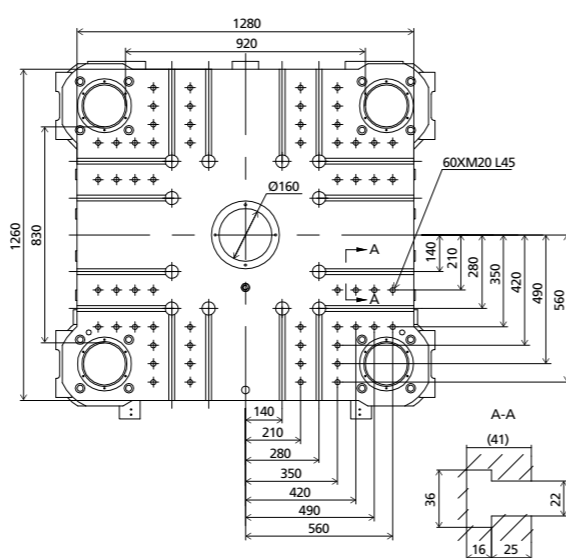
Platen dimensions

Moving platen



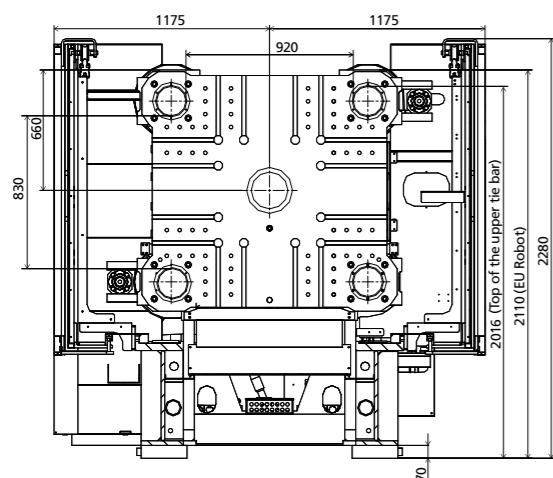
Platen dimensions

Fixed platen



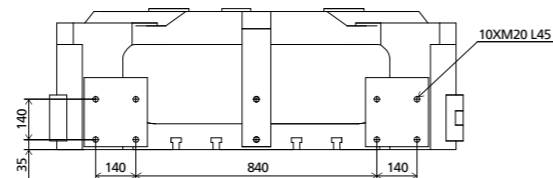
Robot

Mechanical interface

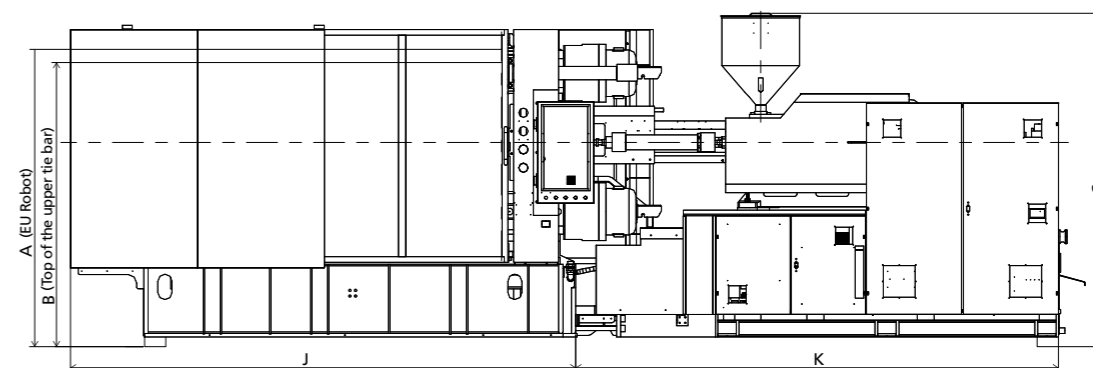


Robot

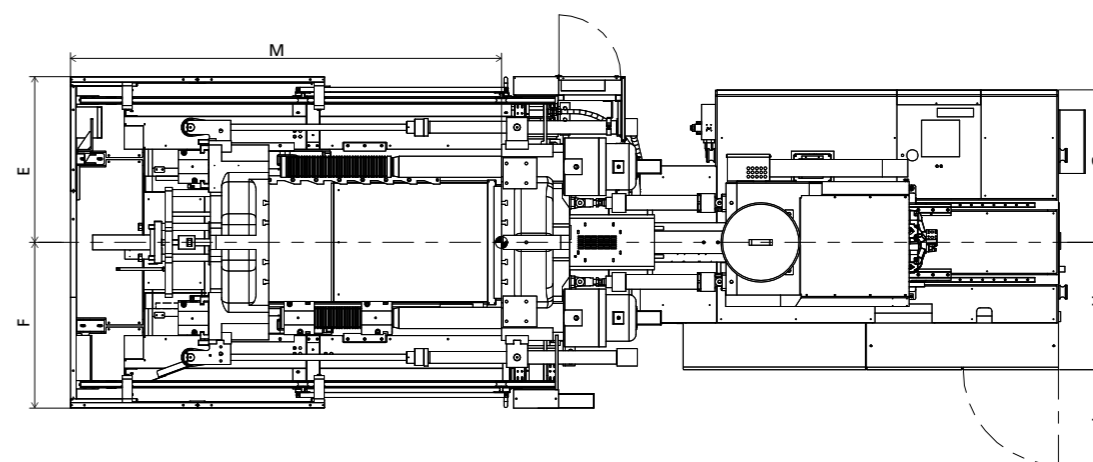
Top view fixed platen



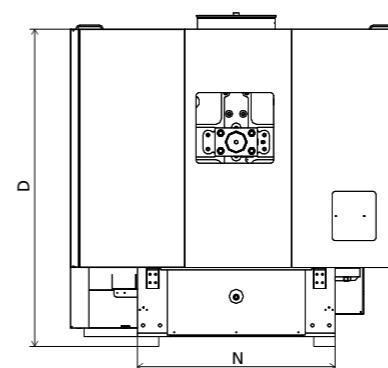
Front view



Top view



Side view



■ Standard

	A	B	C	D	E	F	G	H	I	J	K	M	N
2230	2110	2016	2327	2250	1175	1175	1082	903	675	3581	3705	3056	1400
3430	2110	2016	2366	2250	1175	1175	1082	903	675	3581	3612	3056	1400
4630	2110	2016	2671	2250	1175	1175	1177	943	675	3581	4019	3056	1400

INJECTION UNIT
DIMENSIONS (mm)

We reserve the right to make changes as a result of further technical advantages.

SPECIFICATION JU6500III

SPECIFICATIONS
INJECTION UNIT

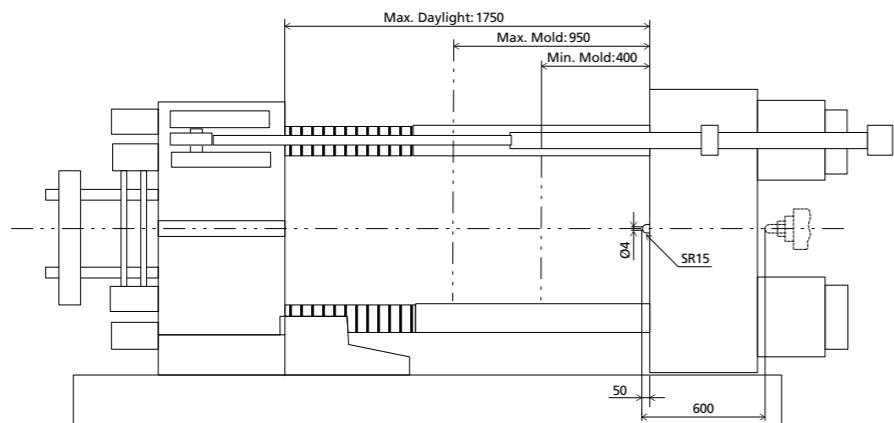
	2230	3430	JU6500III				5330											
			4630															
CLAMPING UNIT																		
Clamping force	kN		6500				kN											
Dist. between tie bars (HxV)	mm		1040x910				mm											
Mold height max	mm		950				mm											
Mold height min	mm		400				mm											
Ejector stroke	mm		250				mm											
Ejector force	kN		110				kN											
Max. daylight	mm		1750				mm											
Mold opening stroke ①	mm		1350/800				mm											
Max. mold weight ②	t		9.5				t											
INJECTION UNIT																		
		A	B	C	D	A	B	C	D									
Screw diameter	mm	65	70	75	80	70	80	85	90	80	85	90	100	80	90	100	110	mm
Screw L /D ratio	L/D	21.5	20	18.7	17.5	22.9	20	18.9	17.8	22	20.7	19.6	17.6	24.8	22	19.8	18	L/D
Injection volume (theoretical)	cm ³	1068	1239	1423	1619	1424	1860	2100	2354	2212	2497	2799	3456	2262	2863	3534	4276	cm ³
Injection weight (PS)	g	972	1128	1295	1473	1296	1692	1911	2142	2013	2272	2547	3145	2058	2605	3216	3892	g
Injection rate	g/s	439	510	585	666	385	503	567	636	525	593	665	821	548	693	856	1036	g/s
Injection pressure	MPa	182	157	137	120	208	159	141	126	181	160	143	116	204	161	131	108	MPa
Injection pressure (max)	MPa	212	183	160	140	239	183	162	145	209	185	165	134	236	187	151	125	MPa
Plasticizing rate (GPPS) ③	g/s	60.0	68.8	77.8	86.4	71.2	93.8	103	116	73.6	81.4	92.6	113	73.3	92.0	113	133	g/s
Plasticizing rate (HDPE) ④	g/s	85.7	102	114	129	102	137	155	179	107	118	134	165	108	137	169	199	g/s
Screw speed	rpm	225				220				165				150				rpm
OTHERS																		
Pump motor power	kW	55				55				65				75				kW
Heating power	kW	33				39				48				54				kW
Machine dimension (L x W x H)	m	7.48x2.58x2.33				7.50x2.58x2.37				7.68x2.58x2.67				8.36x2.58x2.69				m
Machine weight	t	24				25				26				27				t
Hopper capacity	kg	50				50				100				100				kg
Oil tank ⑤	l	450				520				600				730				l

NOTE:
 ① with min. mold height / with max. mold height.
 ② moving platen: 2/3 of max. mold weight.
 ③ Plasticizing capacity (GPPS): GB standard, with application of GPPS plasticizing capacity of 3-zone screws.
 ④ Plasticizing capacity (HDPE): Euromap 19, with application of HDPE plasticizing capacity of barrier screws
 The above plasticizing capacity is for reference only.
 ⑤ The oil tank volume refers to the volume of the oil tank itself, excluding the volume in cylinder and pipeline. In this sense, the customer is advised to prepare the hydraulic oil according to 1.35 times of the oil tank volume.

We reserve the right to make changes as a result of further technical advantages.

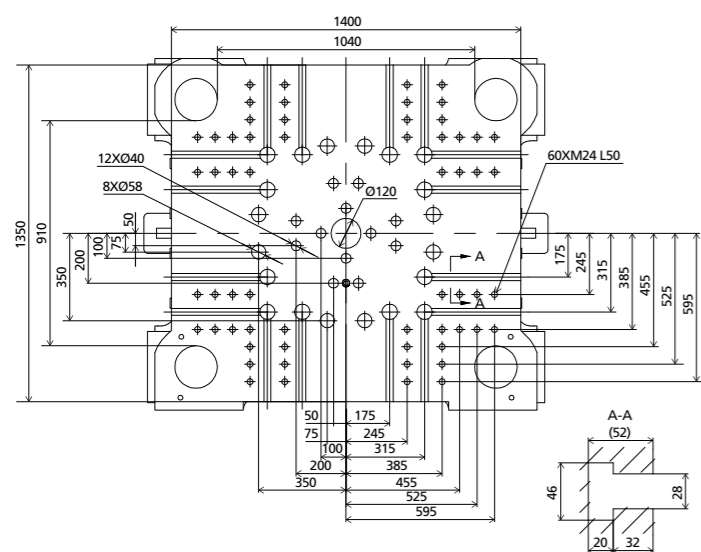
DIMENSIONS JU6500III

Clamping Unit



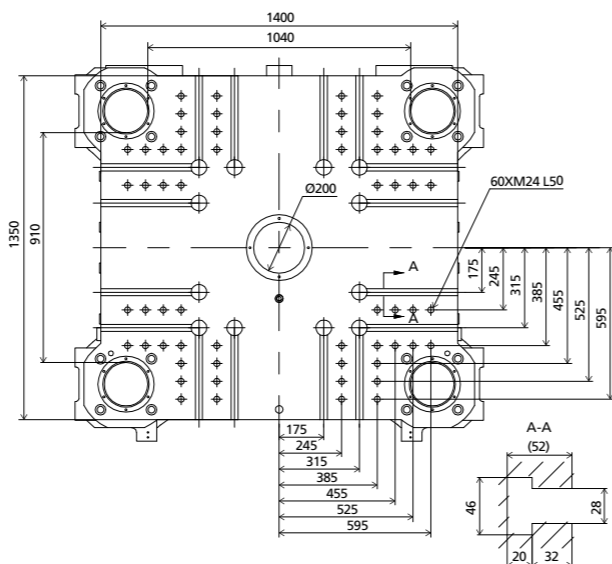
Platen dimensions

Moving platen



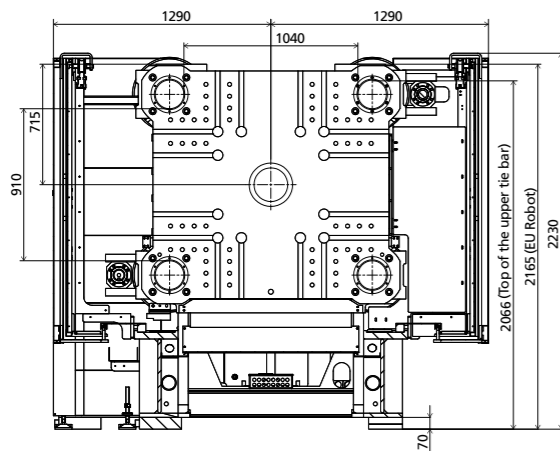
Platen dimensions

Fixed platen



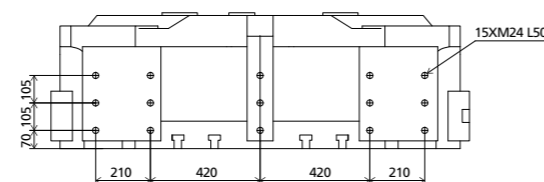
Robot

Mechanical interface

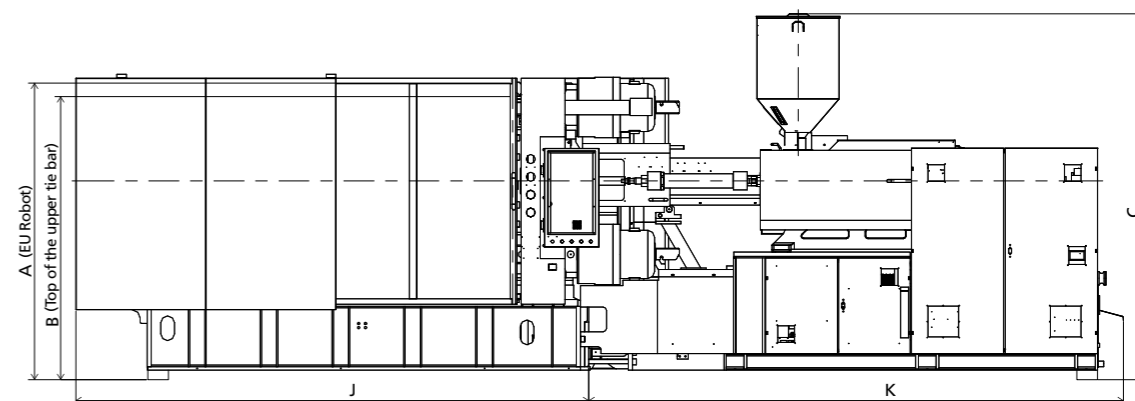


Robot

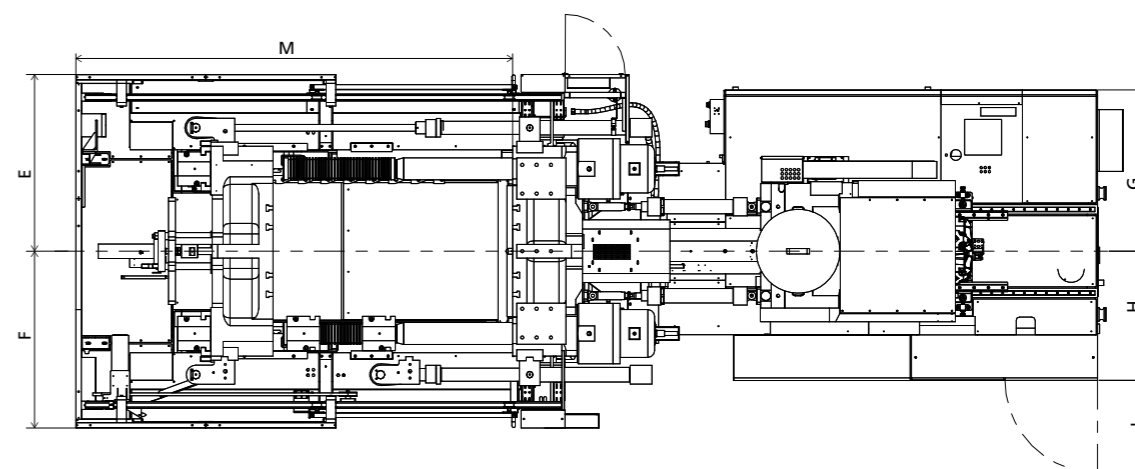
Top view fixed platen



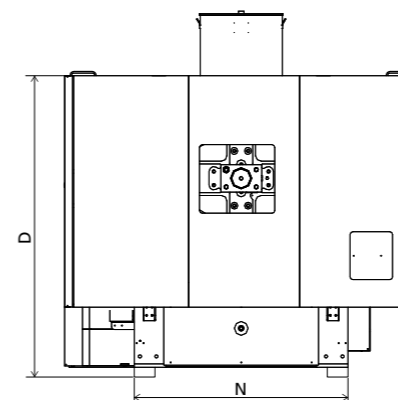
Front view



Top view



Side view



■ Standard

	A	B	C	D	E	F	G	H	I	J	K	M	N
2230	2165	2066	2327	2200	1290	1290	1082	903	675	3746	3707	3191	1560
3430	2165	2066	2366	2200	1290	1290	1082	903	675	3746	3722	3191	1560
4630	2165	2066	2671	2200	1290	1290	1177	943	675	3746	3909	3191	1560
5330	2165	2066	2686	2200	1290	1290	1207	1028	675	3746	4586	3191	1560

INJECTION UNIT
DIMENSIONS (mm)

We reserve the right to make changes as a result of further technical advantages.

SPECIFICATION JU7500III

SPECIFICATIONS
INJECTION UNIT

	3430	4630	JU7500III				5330	6730											
CLAMPING UNIT																			
Clamping force	kN					7500		kN	Clamping force										
Dist. between tie bars (H×V)	mm					1110×960		mm	Dist. between tie bars (H×V)										
Mold height max	mm					950		mm	Mold height max										
Mold height min	mm					450		mm	Mold height min										
Ejector stroke	mm					300		mm	Ejector stroke										
Ejector force	kN					195		kN	Ejector force										
Max. daylight	mm					1850		mm	Max. daylight										
Mold opening stroke ①	mm					1400/900		mm	Mold opening stroke ①										
Max. mold weight ②	t					11		t	Max. mold weight ②										
INJECTION UNIT																			
		A	B	C	D	A	B	C	D	A	B	C	D						
Screw diameter	mm	70	80	85	90	80	85	90	100	80	90	100	110	90	100	110	120	mm	Screw diameter
Screw L /D ratio	L/D	22.9	20	18.9	17.8	22	20.7	19.6	17.6	24.8	22	19.8	18	24.4	22	20	18.3	L/D	Screw L /D ratio
Injection volume (theoretical)	cm ³	1424	1860	2100	2354	2212	2497	2799	3456	2262	2863	3534	4276	2990	3691	4467	5316	cm ³	Injection volume (theoretical)
Injection weight (PS)	g	1296	1692	1911	2142	2013	2272	2547	3145	2058	2605	3216	3892	2721	3359	4065	4837	g	Injection weight (PS)
Injection rate	g/s	457	597	674	755	525	593	665	821	548	693	856	1036	642	793	960	1142	g/s	Injection rate
Injection pressure	MPa	208	159	141	126	181	160	143	116	204	161	131	108	193	157	129	109	MPa	Injection pressure
Injection pressure (max)	MPa	239	183	162	145	209	185	165	134	236	187	151	125	222	180	149	125	MPa	Injection pressure (max)
Plasticizing rate (GPPS) ③	g/s	71.2	93.8	103	116	73.6	81.4	92.6	113	73.3	92.0	113	133	89.5	110	130	152	g/s	Plasticizing rate (GPPS) ③
Plasticizing rate (HDPE) ④	g/s	102	137	155	179	107	118	134	165	108	137	169	199	132	162	193	224	g/s	Plasticizing rate (HDPE) ④
Screw speed	rpm	220				165				150				135				rpm	Screw speed
OTHERS																			
Pump motor power	kW	65				65				75				85				kW	Pump motor power
Heating power	kW	39				48				54				71				kW	Heating power
Machine dimension (L x W x H)	m	7.77×2.86×2.37				8.08×2.86×2.68				8.54×2.86×2.69				8.75×2.86×2.70				m	Machine dimension (L x W x H)
Machine weight	t	28				29				30				32				t	Machine weight
Hopper capacity	kg	50				100				100				100				kg	Hopper capacity
Oil tank ⑤	l	520				600				730				780				l	Oil tank

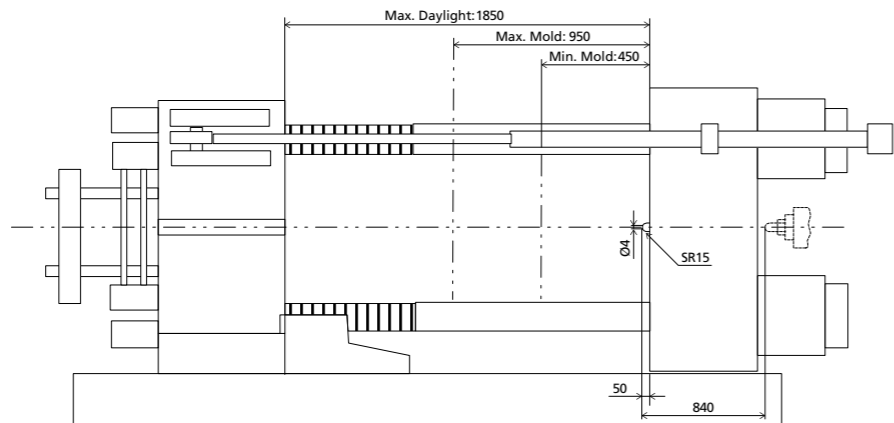
NOTE:

- ① with min. mold height / with max. mold height.
- ② moving platen: 2/3 of max. mold weight.
- ③ Plasticizing capacity (GPPS): GB standard, with application of GPPS plasticizing capacity of 3-zone screws.
- ④ Plasticizing capacity (HDPE): Euromap 19, with application of HDPE plasticizing capacity of barrier screws
The above plasticizing capacity is for reference only.
- ⑤ The oil tank volume refers to the volume of the oil tank itself, excluding the volume in cylinder and pipeline. In this sense, the customer is advised to prepare the hydraulic oil according to 1.35 times of the oil tank volume.

We reserve the right to make changes as a result of further technical advantages.

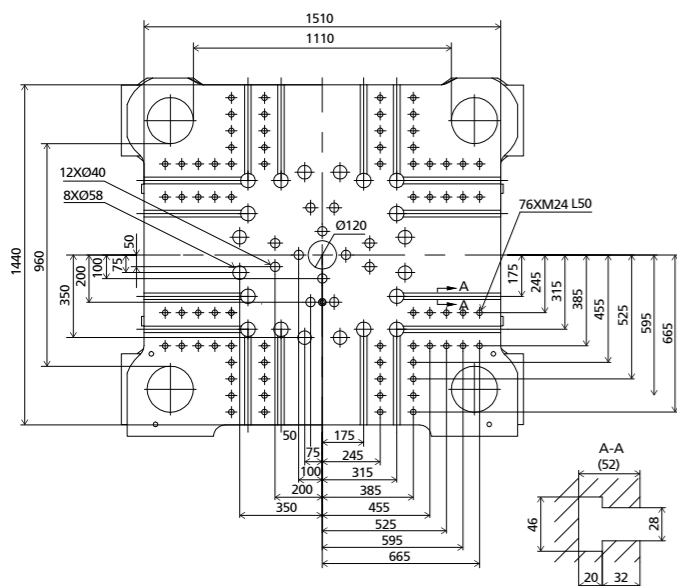
DIMENSIONS JU7500III

Clamping Unit



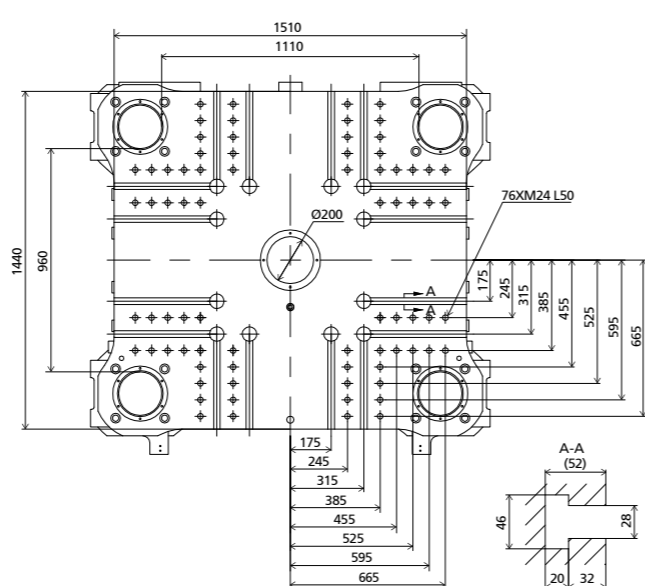
Platen dimensions

Moving platen



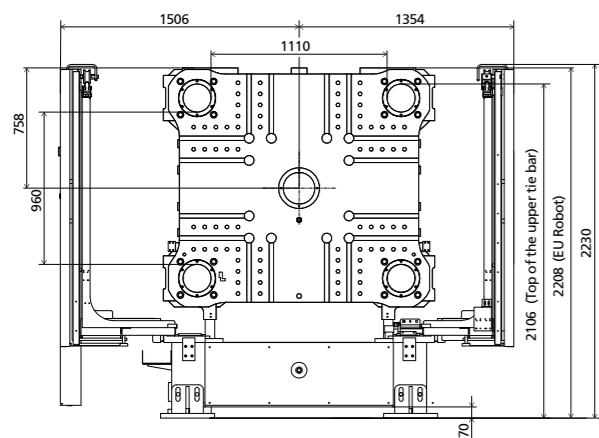
Platen dimensions

Fixed platen



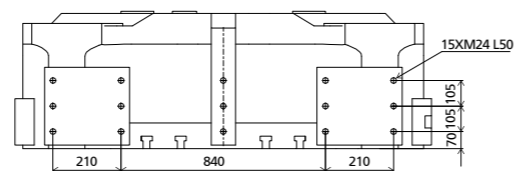
Robot

Mechanical interface

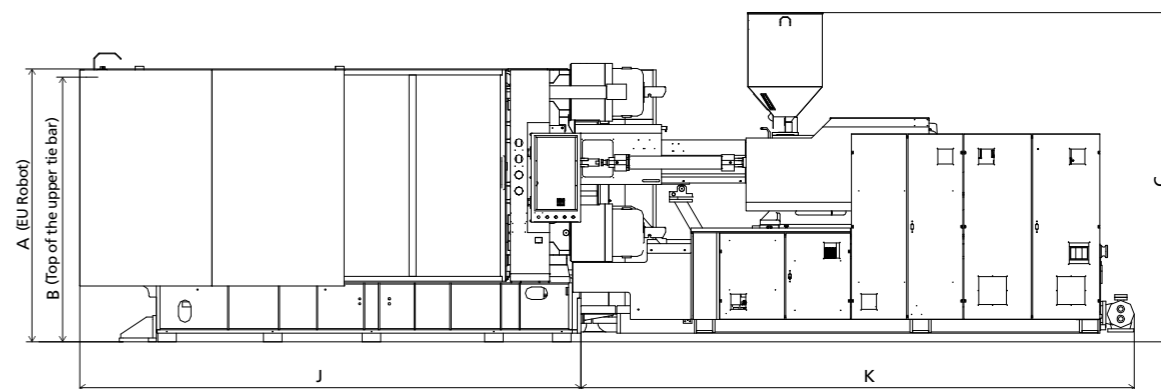


Robot

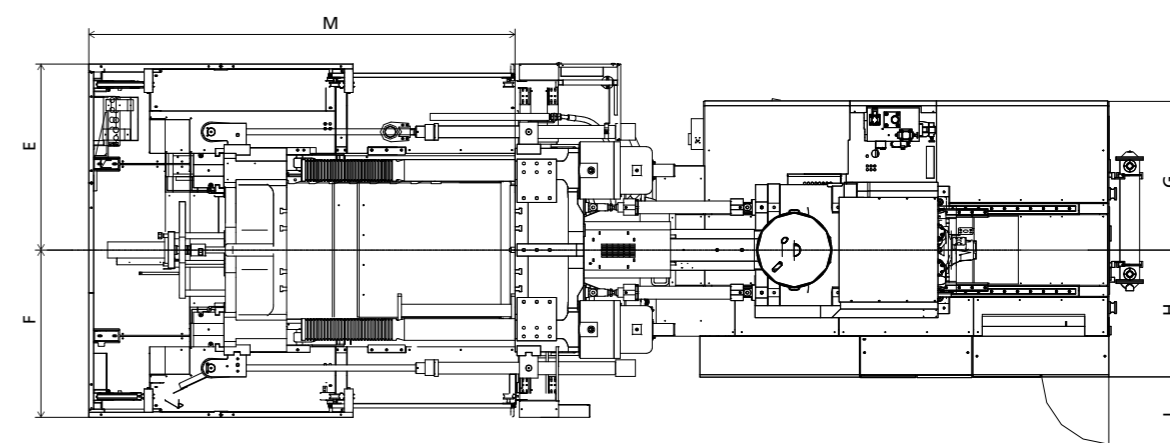
Top view fixed platen



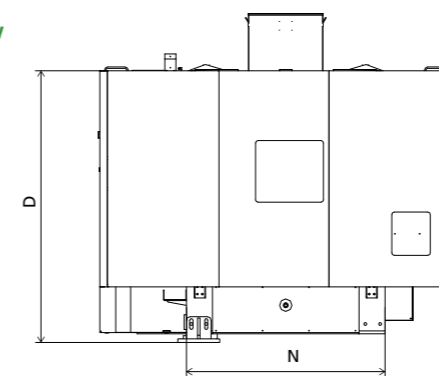
Front view



Top view



Side view



■ Standard

	A	B	C	D	E	F	G	H	I	J	K	M	N
3430	2208	2106	2366	2200	1506	1354	1078	902	675	4055	3707	3450	1607
4630	2208	2106	2671	2200	1506	1354	1258	942	675	4055	4017	3450	1607
5330	2208	2106	2685	2200	1506	1354	1203	1027	544	4055	4478	3450	1607
6730	2208	2106	2700	2200	1506	1354	1198	1042	544	4055	4689	3450	1607

INJECTION UNIT
DIMENSIONS (mm)

We reserve the right to make changes as a result of further technical advantages.

SPECIFICATION JU9000III

SPECIFICATIONS
INJECTION UNIT

		5330				JU9000III 6730				8930					
CLAMPING UNIT														CLAMPING UNIT	
Clamping force	kN													kN	Clamping force
Dist. between tie bars (H×V)	mm													mm	Dist. between tie bars (H×V)
Mold height max	mm													mm	Mold height max
Mold height min	mm													mm	Mold height min
Ejector stroke	mm													mm	Ejector stroke
Ejector force	kN													kN	Ejector force
Max. daylight	mm													mm	Max. daylight
Mold opening stroke ①	mm													mm	Mold opening stroke ①
Max. mold weight ②	t													t	Max. mold weight ②
INJECTION UNIT		A	B	C	D	A	B	C	D	A	B	C	D	INJECTION UNIT	
Screw diameter	mm	80	90	100	110	90	100	110	120	100	110	120	130	mm	Screw diameter
Screw L /D ratio	L/D	24.8	22	19.8	18	24.4	22	20	18.3	24.2	22	20.2	18.6	L/D	Screw L /D ratio
Injection volume (theoretical)	cm ³	2262	2863	3534	4276	2990	3691	4467	5316	4006	4847	5768	6769	cm ³	Injection volume (theoretical)
Injection weight (PS)	g	2058	2605	3216	3892	2721	3359	4065	4837	3645	4410	5249	6160	g	Injection weight (PS)
Injection rate	g/s	548	693	856	1036	642	793	960	1142	762	922	1097	1288	g/s	Injection rate
Injection pressure	MPa	204	161	131	108	193	157	129	109	196	162	136	116	MPa	Injection pressure
Injection pressure (max)	MPa	236	187	151	125	222	180	149	125	223	184	155	132	MPa	Injection pressure (max)
Plasticizing rate (GPPS) ③	g/s	73.3	92.0	113	133	89.5	110	130	152	101	121	140	161	g/s	Plasticizing rate (GPPS) ③
Plasticizing rate (HDPE) ④	g/s	108	137	169	199	132	162	193	224	147	177	201	231	g/s	Plasticizing rate (HDPE) ④
Screw speed	rpm	150				135				116				rpm	Screw speed
OTHERS														OTHERS	
Pump motor power	kW	75				85				112				kW	Pump motor power
Heating power	kW	54				71				83				kW	Heating power
Machine dimension (L x W x H)	m	9.10×3.21×2.83				9.24×3.21×2.84				9.77×3.21×2.85				m	Machine dimension (L x W x H)
Machine weight	t	36				38				40				t	Machine weight
Hopper capacity	kg	100				100				100				kg	Hopper capacity
Oil tank ⑤	l	730				780				960				l	Oil tank

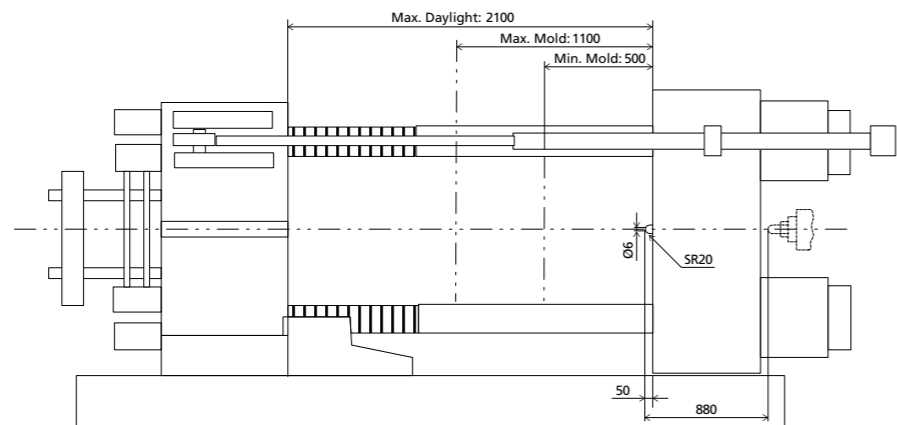
NOTE:

- ① with min. mold height / with max. mold height.
- ② moving platen: 2/3 of max. mold weight.
- ③ Plasticizing capacity (GPPS): GB standard, with application of GPPS plasticizing capacity of 3-zone screws.
- ④ Plasticizing capacity (HDPE): Euromap 19, with application of HDPE plasticizing capacity of barrier screws
The above plasticizing capacity is for reference only.
- ⑤ The oil tank volume refers to the volume of the oil tank itself, excluding the volume in cylinder and pipeline. In this sense, the customer is advised to prepare the hydraulic oil according to 1.35 times of the oil tank volume.

We reserve the right to make changes as a result of further technical advantages.

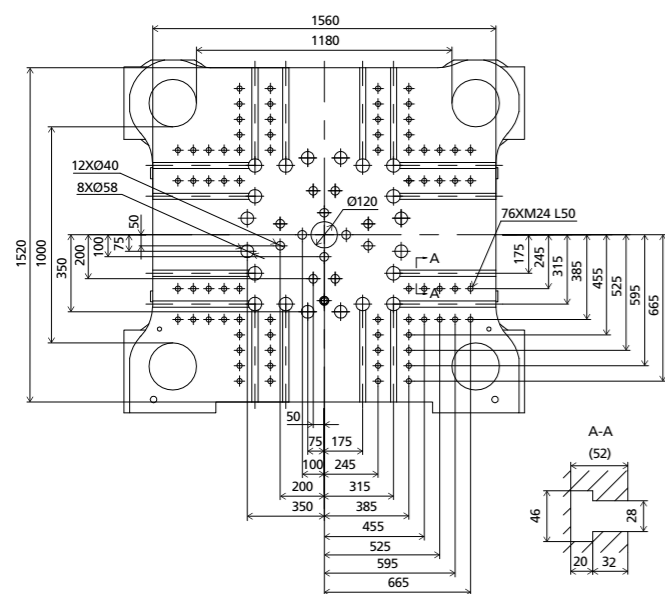
DIMENSIONS JU9000III

Clamping Unit



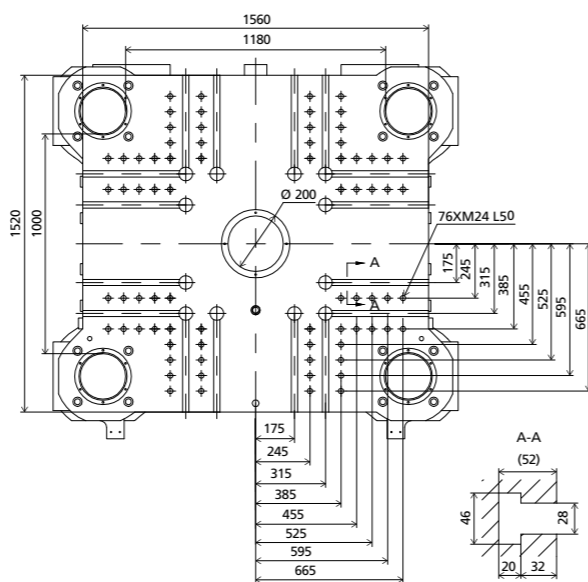
Platen dimensions

Moving platen



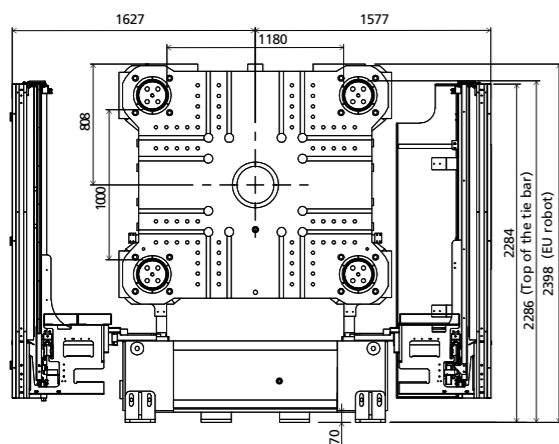
Platen dimensions

Fixed platen



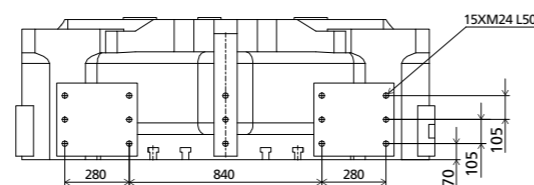
Robot

Mechanical interface

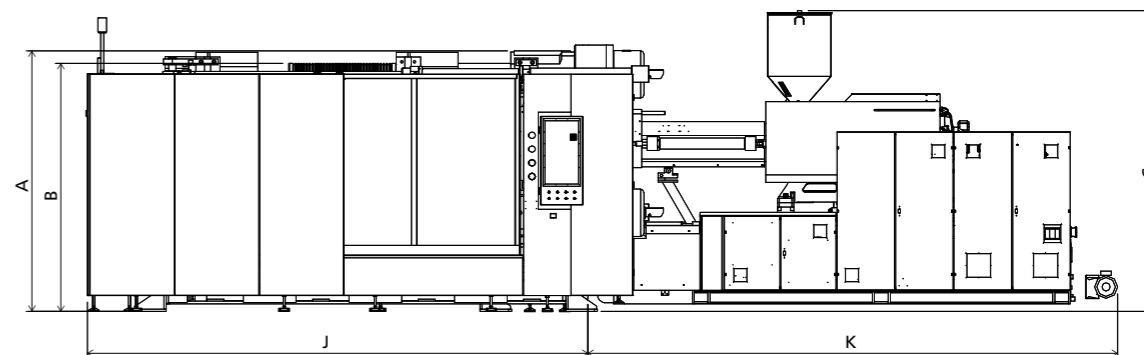


Robot

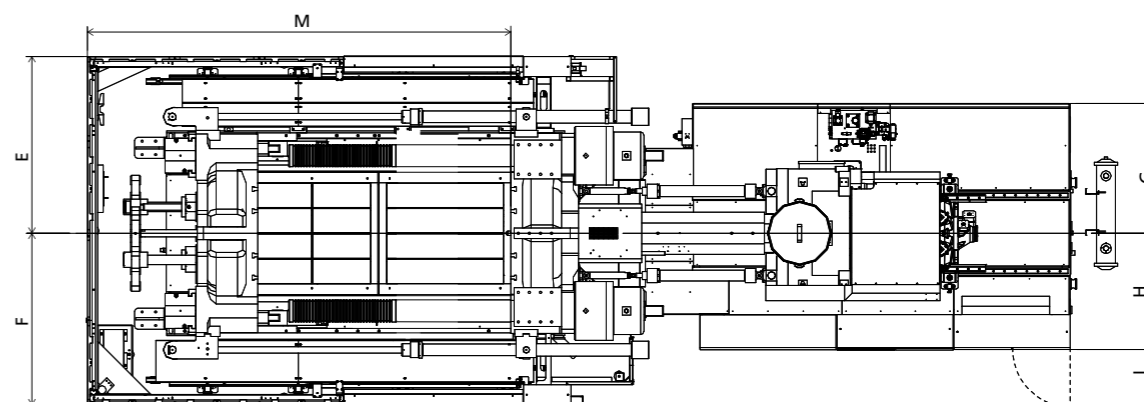
Top view fixed platen



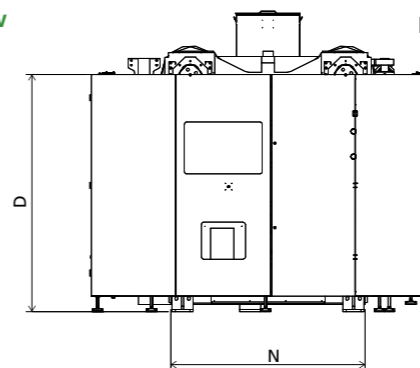
Front view



Top view



Side view



Standard

	A	B	C	D	E	F	G	H	I	J	K	M	N
5330	2398	2286	2825	2265	1627	1577	1203	1027	544	4512	4586	3857	1740
6730	2398	2286	2840	2265	1627	1577	1198	1042	544	4512	4581	3857	1740
8930	2398	2286	2850	2265	1627	1577	1228	1102	544	4512	5021	3857	1740

INJECTION UNIT
DIMENSIONS (mm)

We reserve the right to make changes as a result of further technical advantages.

SPECIFICATION JU10800III

SPECIFICATIONS
INJECTION UNIT

		5330				6730				JU10800III 8930				11300					
CLAMPING UNIT																		CLAMPING UNIT	
Clamping force	kN																	kN	Clamping force
Dist. between tie bars (H×V)	mm																	mm	Dist. between tie bars (H×V)
Mold height max	mm																	mm	Mold height max
Mold height min	mm																	mm	Mold height min
Ejector stroke	mm																	mm	Ejector stroke
Ejector force	kN																	kN	Ejector force
Max. daylight	mm																	mm	Max. daylight
Mold opening stroke ①	mm																	mm	Mold opening stroke ①
Max. mold weight ②	t																	t	Max. mold weight ②
INJECTION UNIT		A	B	C	D	A	B	C	D	A	B	C	D	A	B	C	D	INJECTION UNIT	
Screw diameter	mm	80	90	100	110	90	100	110	120	100	110	120	130	110	120	130	140	mm	Screw diameter
Screw L /D ratio	L/D	24.8	22	19.8	18	24.4	22	20	18.3	24.2	22	20.2	18.6	26.2	24	22.2	20.6	L/D	Screw L /D ratio
Injection volume (theoretical)	cm ³	2262	2863	3534	4276	2990	3691	4467	5316	4006	4847	5768	6769	5227	6220	7300	8467	cm ³	Injection volume (theoretical)
Injection weight (PS)	g	2058	2605	3216	3892	2721	3359	4065	4837	3645	4410	5249	6160	4756	5661	6643	7705	g	Injection weight (PS)
Injection rate	g/s	608	770	951	1150	642	793	960	1142	762	922	1097	1288	924	1100	1291	1497	g/s	Injection rate
Injection pressure	MPa	204	161	131	108	193	157	129	109	196	162	136	116	190	159	136	117	MPa	Injection pressure
Injection pressure (max)	MPa	236	187	151	125	222	180	149	125	223	184	155	132	218	183	156	135	MPa	Injection pressure (max)
Plasticizing rate (GPPS) ③	g/s	80.6	101	125	146	89.5	110	130	152	101	121	140	161	123	142	164	187	g/s	Plasticizing rate (GPPS) ③
Plasticizing rate (HDPE) ④	g/s	119	151	186	219	132	162	193	224	147	177	201	231	187	217	240	273	g/s	Plasticizing rate (HDPE) ④
Screw speed	rpm	165				135				116				105				rpm	Screw speed
OTHERS																		OTHERS	
Pump motor power	kW	85				85				112				130				kW	Pump motor power
Heating power	kW	54				71				83				104				kW	Heating power
Machine dimension (L x W x H)	m	9.29×3.31×2.83				9.39×3.31×2.84				9.85×3.31×2.85				10.52×3.31×4.18				m	Machine dimension (L x W x H)
Machine weight	t	43				45				46				50				t	Machine weight
Hopper capacity	kg	100				100				100				400				kg	Hopper capacity
Oil tank ⑤	l	730				780				960				1250				l	Oil tank

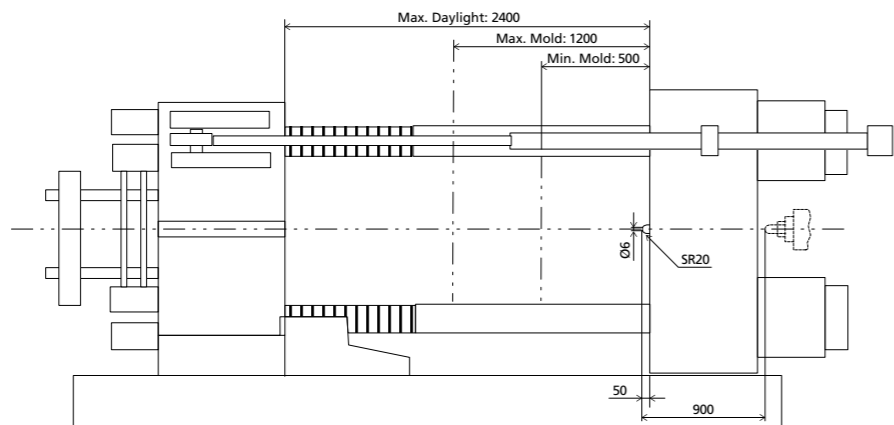
NOTE:

- ① with min. mold height / with max. mold height.
- ② moving platen: 2/3 of max. mold weight.
- ③ Plasticizing capacity (GPPS): GB standard, with application of GPPS plasticizing capacity of 3-zone screws.
- ④ Plasticizing capacity (HDPE): Euromap 19, with application of HDPE plasticizing capacity of barrier screws
The above plasticizing capacity is for reference only.
- ⑤ The oil tank volume refers to the volume of the oil tank itself, excluding the volume in cylinder and pipeline. In this sense, the customer is advised to prepare the hydraulic oil according to 1.35 times of the oil tank volume.

We reserve the right to make changes as a result of further technical advantages.

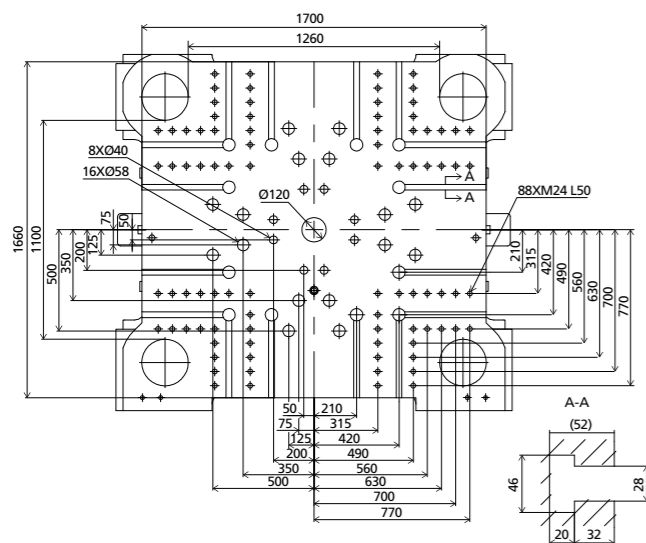
DIMENSIONS JU10800III

Clamping Unit



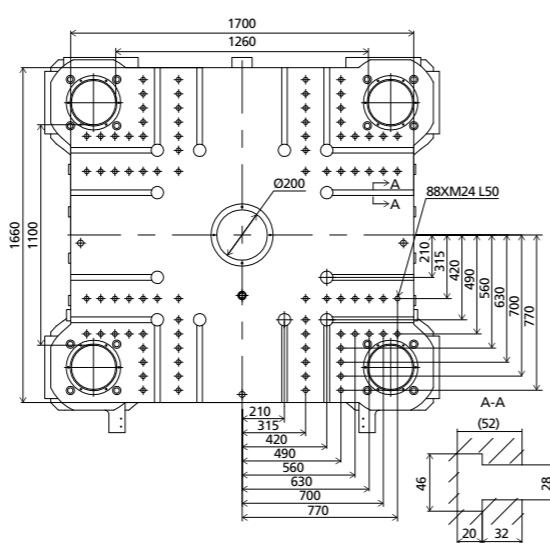
Platen dimensions

Moving platen



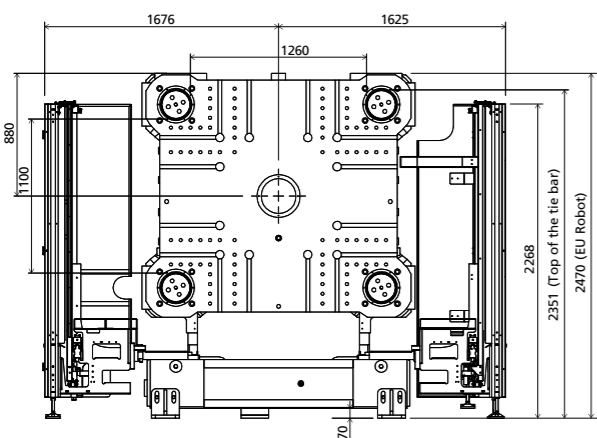
Platen dimensions

Fixed platen



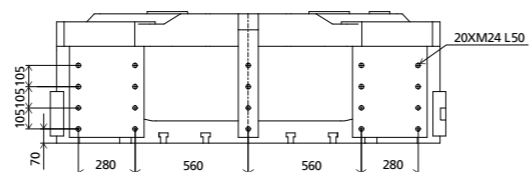
Robot

Mechanical interface

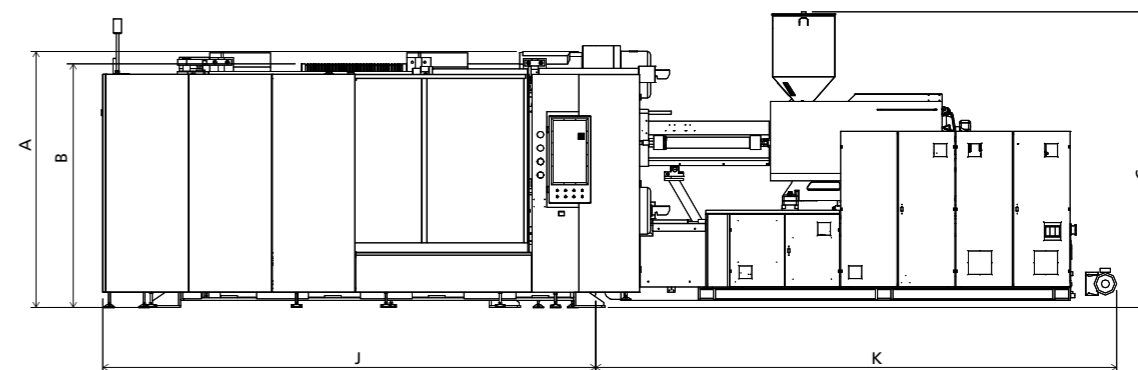


Robot

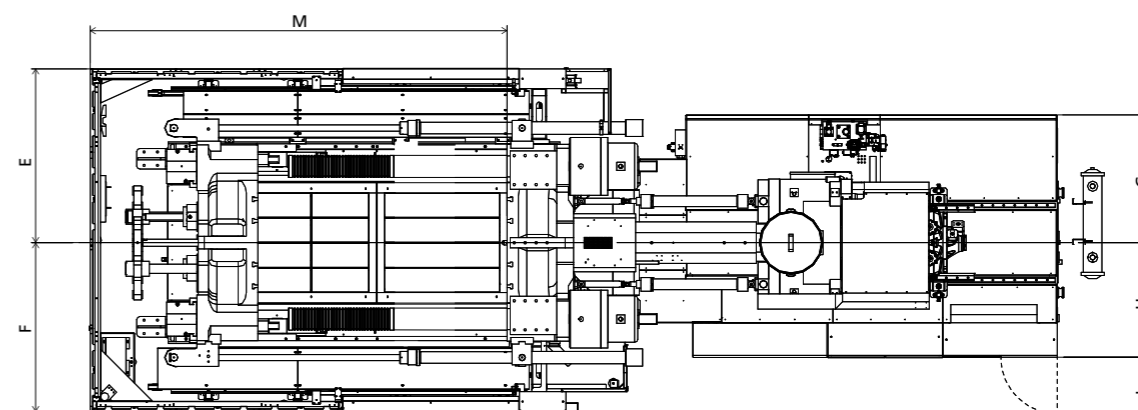
Top view fixed platen



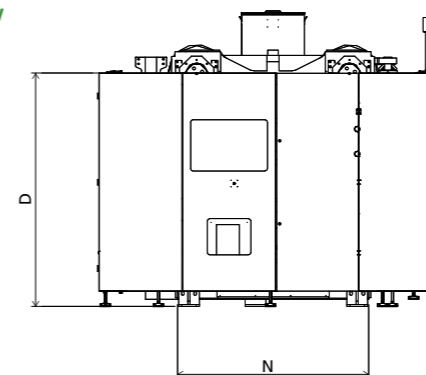
Front view



Top view



Side view



Standard

	A	B	C	D	E	F	G	H	I	J	K	M	N
5330	2470	2351	2825	2250	1676	1625	1203	1027	544	4699	4586	4014	1840
6730	2470	2351	2840	2250	1676	1625	1198	1042	544	4699	4689	4014	1840
8930	2470	2351	2850	2250	1676	1625	1228	1102	544	4699	4913	4014	1840
11300	2470	2351	4180	2250	1676	1625	1318	1212	544	4699	5821	4014	1840

INJECTION UNIT
DIMENSIONS (mm)

We reserve the right to make changes as a result of further technical advantages.